

HF 360-2

DALI-2 APC - concealed
 EAN 4007841 064266
 Article number 064266



Hochfrequenz
Sensor 360°



Max. Ø 12 m



IP20



Montagehöhe max. 4
m



2 - 2000 Lux



10 Sek - 60 Min



iQ-mode



Teach mode



Application
Controller



Plastikfreie
Verpackung

Function description

Smart surveillance professional. The HF 360-2 from the new Control PRO 2 range. Modern look and intelligent 360° HF sensor technology – ideal for stairwells and toilet facilities with cubicles. Conveniently adjusted and interconnected via Bluetooth. Interfaces: COM1, COM2, DALI-2 APC, DALI-2 IPD, KNX, IP and BT IPD (Slave). Mounting height up to 4 m. Reach: 12 m.

Technical specifications

Dimensions (L x W x H)	61 x 103 x 103 mm	Mounting height max.	4,00 m
With motion detector	Yes	Optimum mounting height	2,8 m
Manufacturer's Warranty	5 years	HF-system	5,8 GHz
Settings via	Bluetooth	Detection	also through glass, wood and stud walls
With remote control	No	Detection angle	360 °
Version	DALI-2 APC - concealed	Angle of aperture	140 °
PU1, EAN	4007841064266	Sneak-by guard	Yes
Type	Presence detector	Capability of masking out individual segments	No
Application, place	Indoors	Electronic scalability	Yes
Application, room	function room / ancillary room, kitchenette, stairwell, WC / washroom, Indoors	Mechanical scalability	No
Colour	white	Reach, radial	Ø 12 m (113 m ²)
Colour, RAL	9003	Reach, tangential	Ø 12 m (113 m ²)
Includes corner wall mount	No	Transmitter power	< 1 mW
Installation site	ceiling	Functions	Semi-/fully automatic, Constant-lighting control, Lighting scenario, Master/slave override, Neighbouring group function,
Installation	Concealed wiring, Ceiling		
IP-rating	IP20		

HF 360-2

DALI-2 APC - concealed
EAN 4007841 064266
Article number 064266



Technical specifications

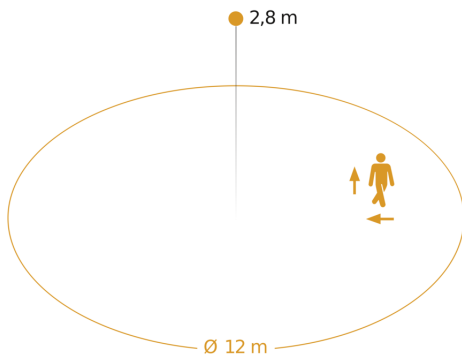
Ambient temperature	-25 – 50 °C
Material	Plastic
Mains power supply	220 – 240 V / 50 – 60 Hz
Power supply, detail	max. 64 users
Number of Dali users	64
SteuerAusgang, Dali	Addressable / broadcast 64 electronic ballasts
Technology, sensors	High frequency, Photo-cell controller
Mounting height	2,50 – 4,00 m

	TouchDIM function, Selecting programmed lighting scenarios, Constant-lighting control ON-OFF, Manual ON / ON-OFF, Normal / test mode
Twilight setting	2 – 2000 lx
Time setting	10 s – 60 Min.
Basic light level function	Yes
Basic light level function time	1-60 min, all night
Main light adjustable	50 - 100 %
Twilight setting TEACH	Yes
Constant-lighting control	Yes
Interconnection	Yes
Type of interconnection	Master/slave
Interconnection via	Bluetooth, DALI bus

HF 360-2

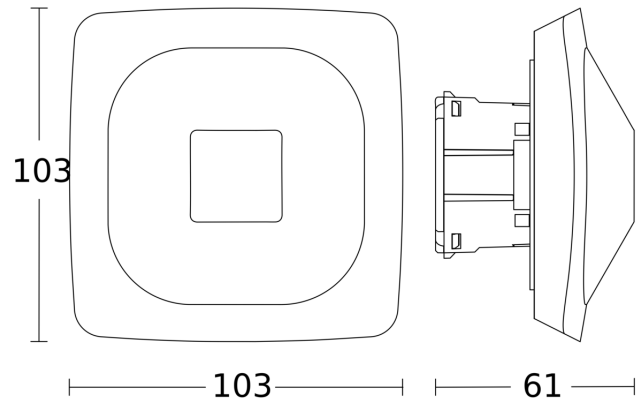
DALI-2 APC - concealed
 EAN 4007841 064266
 Article number 064266

Detection Zone

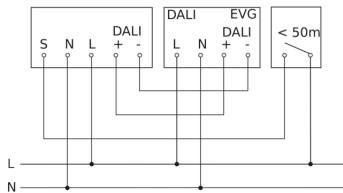


Possible mounting height: 2,50 m - 4,00 m
 Orange: radial and tangential

Dimension Drawing



Master circuit diagram



Master/slave interconnection circuit diagram

